



Grant Information Session



TODAY'S PRESENTERS



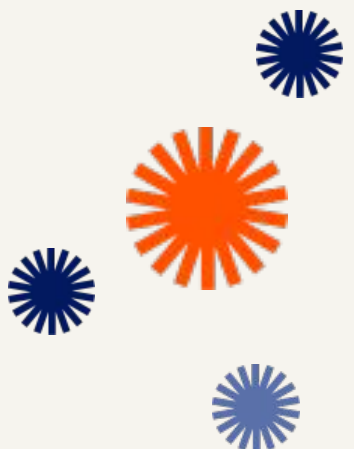
Amy Mizcles

Program Officer for Rural Community Investments
Central Texas Community Foundation



Jazzmyne DeShay

Belonging Coordinator
HEAL Alliance



PURPOSE OF TODAY'S SESSION

- Introduce the Central Texas Community Foundation and HEAL Alliance
- Introduce the Rural Impact Investment Fund (RIIF) and the opportunities for capacity building the Fund offers
- Highlight the three Strategic Priorities of the Fund
- Walk through the timeline, eligibility requirements, and the application process for RIIF
- We will also have time for Q&A



For
Good.
For
Ever.



**CENTRAL TEXAS
COMMUNITY
FOUNDATION™**

Mission

The mission of the Central Texas Community Foundation (CTXCF) is to nurture and inspire philanthropy.

Vision

A Central Texas community where generosity flourishes, empowering nonprofits and individuals to create lasting, positive change through philanthropy.

*YOU
Belong Here*



Mission

The mission of the HEAL Alliance is to become a vital community partner and advocate fostering belonging, authenticity, and courageous engagement in rural America.

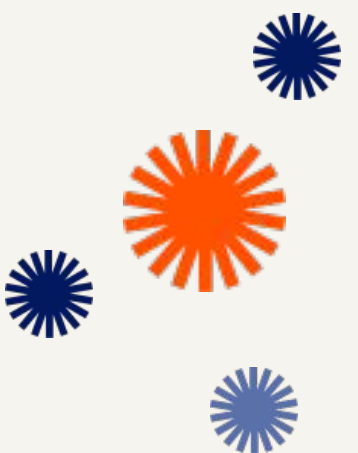
Vision

We envision a society that empowers individuals, communities and organizations to address systemic inequities for a vibrant global community.

ABOUT THE FUND



- RIFF was created to correct long standing gaps in traditional philanthropy by investing in those often left out - small rural nonprofits and grassroots leaders with deep community knowledge but limited access to institutional support.
- RIFF is designed to invest in small under-resourced rural nonprofits and grassroots leaders with funds that will strengthen organizations – not for direct services or programming, but for **capacity building**.
- We are grateful for the support of St. David's Foundation for making this initiative possible.





EST 2025

RIIF ADVISORY COUNCIL

RURAL IMPACT INVESTMENT FUND
ADVISORY COUNCIL



Cydney Ervin-Hill
Chair & Hays County
Representative



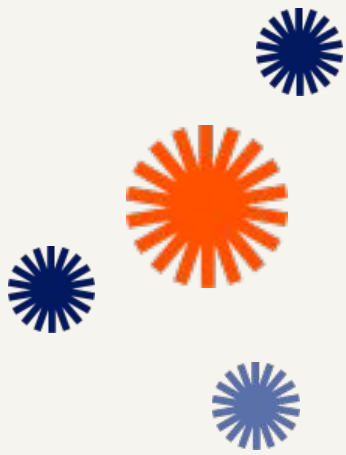
Ailisha Macharia
At Large
Representative



Marcus Reese
Williamson County
Representative



Gerlicia Thompson
Bastrop County
Representative



RIIF LEADERSHIP TEAM



Amy Mizcles

Program Officer for Rural Community Investments
Central Texas Community Foundation



Krystal Grimes

Founder and Chief Strategist
HEAL Alliance



Jazzmyne DeShay

Belonging Coordinator
HEAL Alliance



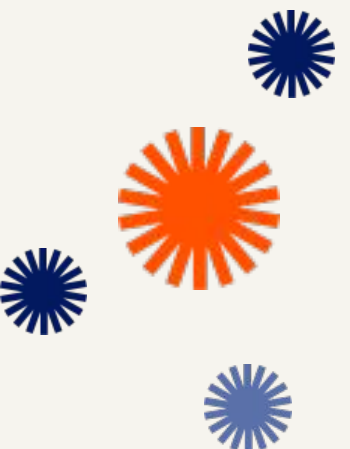
William P. Moore, Ph. D.

Principal, The Strategy Group
Strategic Advisor, Central Texas Community
Foundation



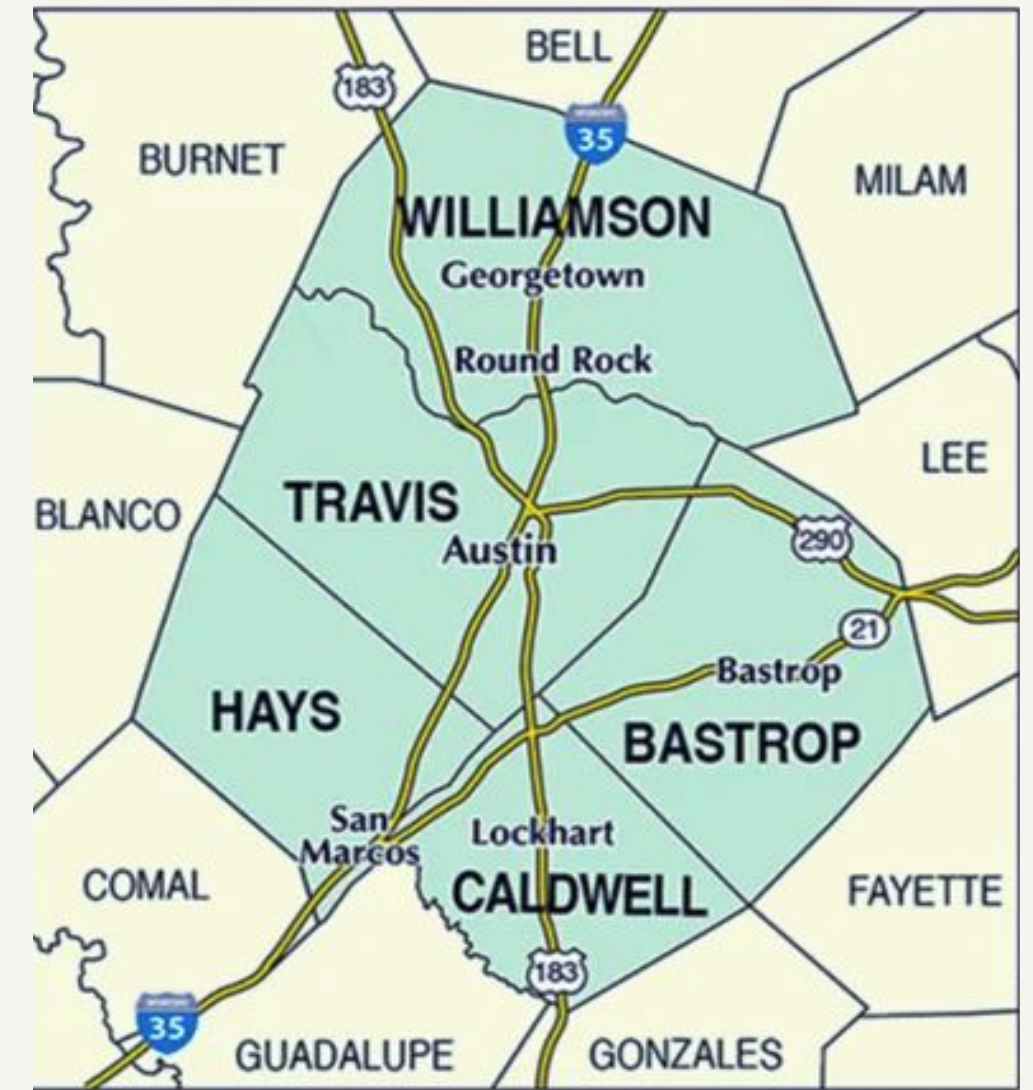
Amy Merida

Executive Director
Central Texas Community Foundation



WHO IS THIS FUND FOR?

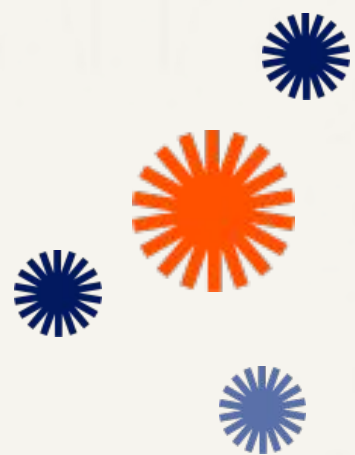
RIIF is focused on capacity-building for **small, rural nonprofit organizations and grassroots leaders** who are **improving health and well-being**, especially for people **navigating economic hardship or from historically marginalized communities** in Bastrop, Caldwell, Hays, and Williamson Counties.



WHAT DOES RIIF FUND?

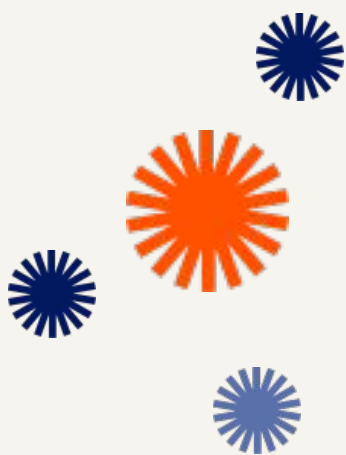
Capacity building - **investing in YOU!**

Flexible grants to nonprofits and grassroots organizations to develop and deepen skills, knowledge, and infrastructure to improve performance, adapt to change, and ultimately have a greater impact in your community.

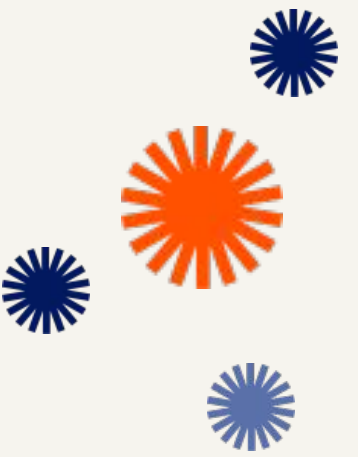


KEY FEATURES OF CAPACITY BUILDING

- Strengthens organizational infrastructure (governance, staffing, policies, systems).
- Improves leadership and decision-making capabilities.
- Expands financial health and resource diversification.
- Enhances program quality and accountability through evaluation and learning systems.
- Builds adaptability so the organization can respond to new challenges and opportunities.



THREE STRATEGIC PRIORITIES



Organizational Capacity Building: Grants to help rural leaders build stronger nonprofit organizations or start new nonprofits focused on health and wellbeing. Start-up funding can include first year compensation for new leaders.

Community Leadership Development: Grants to support emerging grassroots leaders and help experienced grassroots leaders mentor new ones. Community leadership requires different skills and values than organizational leadership.

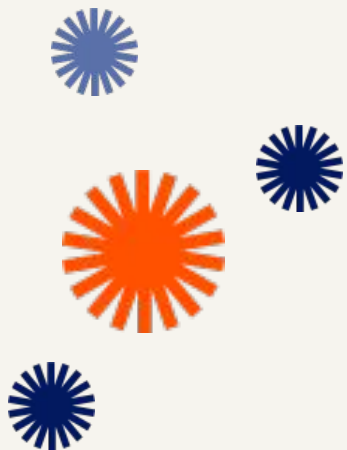
General Operating Support: Unrestricted general operating support grants can be used for any purpose that supports the nonprofit's mission, giving the organization the flexibility to allocate funds where they are most needed. **GOS grants can not exceed 10% of the annual operating budget for the organization.**



ABOUT THE APPLICATION

We are working to streamline the application to the greatest extent possible!

In addition to asking for general demographic information - your name, organization name, mission, and confirming you meet the eligibility criteria, etc., you will be asked **THREE** main questions. These questions can be answered in written form OR you can submit a video of yourself responding to these questions.



THE THREE QUESTIONS - YOUR PROJECT SUMMARY



What's holding your organization back?

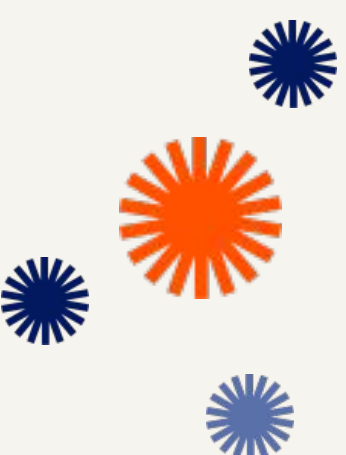
Question 1: What internal challenges are limiting your effectiveness and how does this affect your work (e.g., equipment, staffing, technology, software, leadership training, community building training, fundraising, evaluation, board development)?

What capacity building support is needed?

Question 2: What support could strengthen your organization's capacity?

How will this support impact your mission?

Question 3: How will addressing this need increase your ability to deliver on your mission?

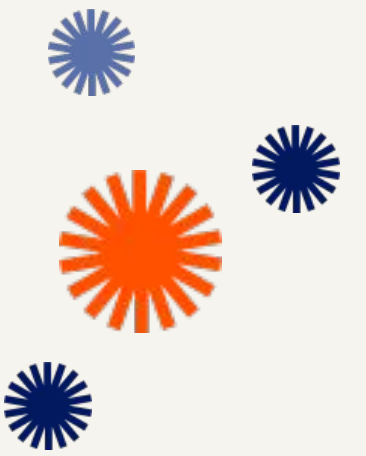


ELIGIBILITY CRITERIA

Eligible Applicants Must:

- **Be working to improve the health and well-being of individuals and families navigating economic hardship** as well as marginalized and historically underrepresented communities and groups in Bastrop, Caldwell, Hays, and Williamson Counties. Marginalized and historically underrepresented communities and groups and individuals are encouraged to apply.
- **Have a physical address in at least one of the four rural counties:** Bastrop, Caldwell, Hays, and Williamson Counties.
- **Be tax-exempt under IRS Section 501(c)3, and in good standing** in the state in which they are incorporated. **Organizations without 501(c)(3) status may still apply through a fiscal sponsor** that is a 501(c)(3) in good standing with the State.
- **Have an annual operating budget of \$250,000 or less.**
- In addition to the above criteria, eligible applicants include: **collaborations, coalitions, or partnerships** of two or more nonprofit organizations or a network of organizations (one of which must be a 501(c3) charitable organization).

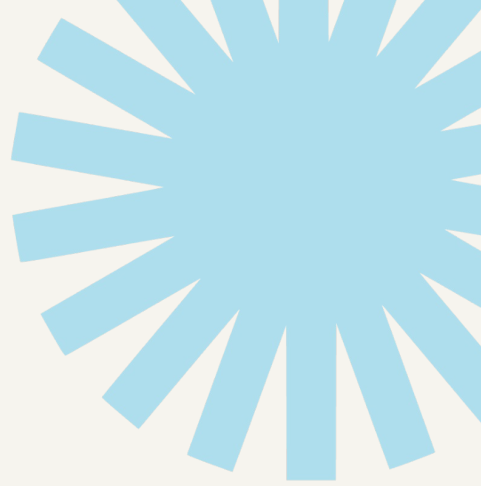
FUNDING DETAILS



- Total Funding Available: \$250,000
- Minimum award is \$1,000
- Maximum award is \$25,000
- One 12-month grant for nonprofit organizations or fiscally-sponsored entities.

Applicants may apply for as many of these grant opportunities as they wish. However, an applicant can only receive one grant from the Rural Impact Investment Fund per grant cycle.

GRANT CYCLE TIMELINE



September 10: Grant Guidelines Posted

October 1: Application Window Opens

October 1: Grant Information Session #2

October 7 - 24: Virtual and in-person meetings to support applicants

October 31: Application Window Closes at 5:00PM CST

November 3 - 20: Applications review period

December 1-15: RIIF Advisory Council determination meetings

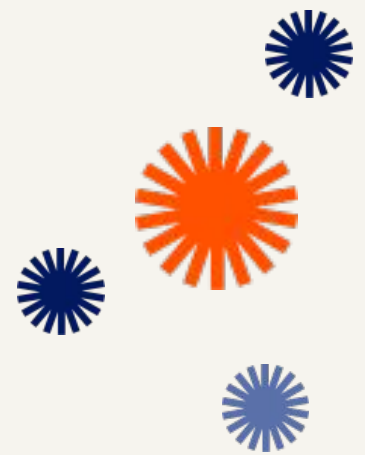
December 16: Grant applicant notifications

December 16-January 15: Grant partner agreements finalized and executed

January 15-31 Declined applicant feedback sessions

February 1: Grant term begins

May 2026: RIIF Grant Partner Celebration



TIPS FOR A STRONG APPLICATION



1. Align with one of the three funding strategies.

- Make sure your project clearly fits one of the three RIIF Strategic Priorities: Organizational Capacity Building, Community Leadership Development, or General Operating Support.

2. Speak from the heart.

- When answering the three questions, describe what is holding your organization back, what capacity building support is needed, and how RIIF funding will support your mission.

3. Prepare Key Documents in Advance

- **Draft your Project Summary** answering the three key application questions (note word limits)
- **If you are a nonprofit**, gather required documents: IRS Determination Letter, current Board-Approved Annual Budget, Statement of Activities, Balance Sheet, and your most recent 990.
- **If you are applying with a fiscal sponsor**, work with them on a fiscal sponsor agreement (MOU or Contract) that details how you will work together. Visit CTXCF.ORG/RIIF for more information and resources on fiscal sponsorship.
- **Fiscal sponsors will be required to submit** the following documents: IRS Determination Letter, current Board-Approved Annual Budget, most recent 990, most recent audit report, and a Fiscal Sponsor Agreement with the Applicant..
- **If you lack one or more of these do not assume you are ineligible! Contact CTXCF - Staff are happy to offer alternatives or suggestions so you can apply.**

IMPORTANT NOTES FOR APPLICANTS



- **Funding Restrictions:** RIIF does not fund endowments, political activities, or efforts to influence legislation or support candidates. Programs that require adherence to specific religious beliefs are also ineligible; however, faith-based organizations serving the broader community may apply.
- **Review the RIIF Grant Guidelines & Eligibility Criteria - Published September 10, 2025.** It includes the information we reviewed today plus a list of RIIF key concepts and definitions.

For example: *What do we mean by grassroots leader or organization?* A community leader or group serving their communities without robust organizational support or 501(c)(3) status. These leaders and organizations often rely on volunteers and operate with minimal budgets.

For example: *What do we mean by health and wellbeing?* Non-medical factors that influence health outcomes, including access to healthcare, education, economic stability, and community support.

NEXT STEPS FOR APPLICANTS

Important Upcoming Dates:

- October 1: Application Window Opens
- October 1: Grant Information Session #2
- October 7 - 24: Virtual and in-person meetings to support applicants
- October 31: Application Window Closes at 5:00PM CST

Primary Support:

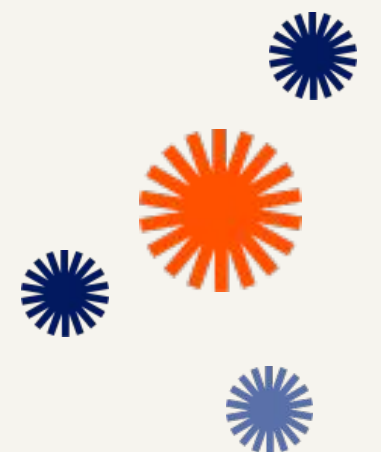
Amy Mizcles

Program Officer for Rural Community Investments

Central Texas Community Foundation

512-514-0046 ext 1007

amy.mizcles@ctxcf.org

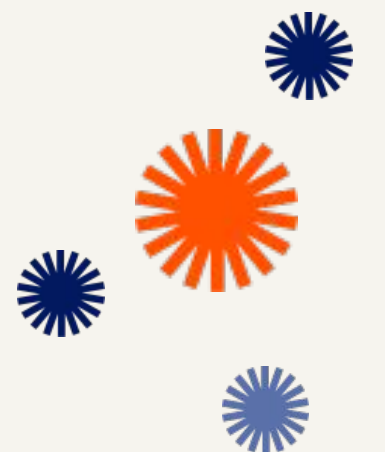


Q&A

What questions do you have for us?

What did we miss?

What additional information would be helpful for you?



STAY IN THE KNOW!



**Visit the RIIF Page
& Sign Up for Updates!**



**Follow us on
Facebook!**



THANK YOU!

